

Keku Suspension fitting

- Do not treat with chemical solutions or aggressive greases
- Do not adjust by hammering

Note

The Keku R room system (store fixtures system) is based on the Keku range and can be found in section 13.

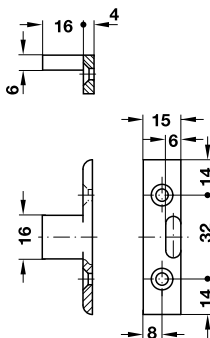
- Area of application: For fastening panels to frame structures
- Material: Plastic (polycarbonate)
- Colour: Black
- Temperature range: -100 to +135 °C
- Suitable for screw fixing in 32 mm series drilled holes



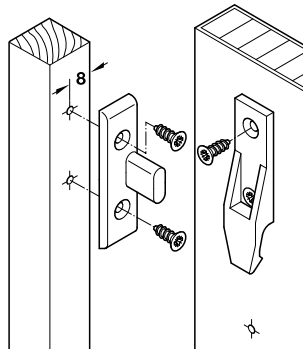
Keku Suspension fitting

→ **EH Frame component**

For screw fixing to substructures



Installation

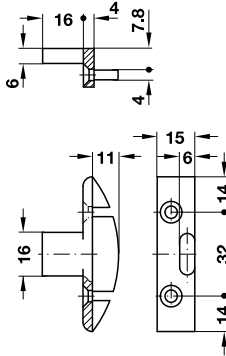


Installation	Cat. No.
With chipboard screws with countersunk head Ø 4.0 mm	262.49.365
With Varianta special screws with countersunk head Ø 3.0 mm or 5.0 mm	262.49.366

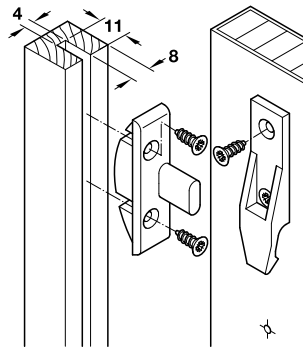
Packing: 200 pieces



For groove mounting and screw fixing to substructures



Installation



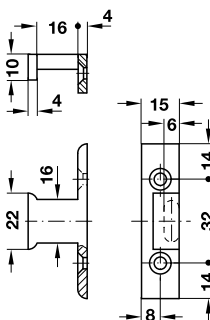
Installation	Cat. No.
With chipboard screws with countersunk head Ø 4.0 mm	262.49.360

Packing: 200 pieces

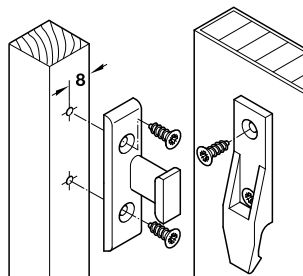


→ **EHS Frame component**

For screw fixing to substructures, with side guide



Installation



Installation	Cat. No.
With chipboard screws with countersunk head Ø 4.0 mm	262.49.367
With Varianta special screws with countersunk head Ø 3.0 mm or 5.0 mm	262.49.368

Packing: 200 pieces

Functionality

The side guide

- prevents the workpiece from slipping sideways
- keeps the workpiece edges parallel
- creates a lateral connection in conjunction with the panel



Keku Suspension fitting

→ Panel component

- Installation: For screw fixing to panel with chipboard screws \varnothing 4.0 mm or Varianta special screws \varnothing 3.0 mm or 5 mm

Note

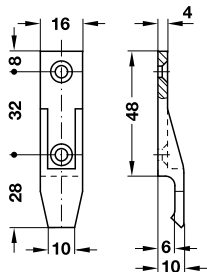
The combined use of panel components with and without lip on one panel reduces the overall snap-in function.

With lip



3

Connector Technology

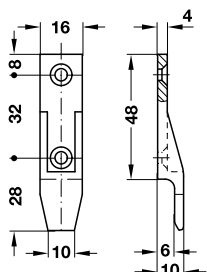


Installation	Cat. No.
With chipboard screws with countersunk head \varnothing 4.0 mm	262.49.356
With Varianta special screws with countersunk head \varnothing 3.0 or 5.0 mm	262.49.357

Packing: 200 pieces



Without lip, for panels that are frequently removed

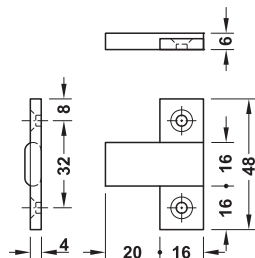


Installation	Cat. No.
With chipboard screws with countersunk head \varnothing 4.0 mm	262.49.350
With Varianta special screws with countersunk head \varnothing 3.0 or 5.0 mm	262.49.351

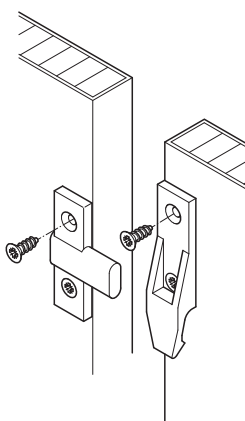
Packing: 200 pieces



→ EH Panel component



Installation

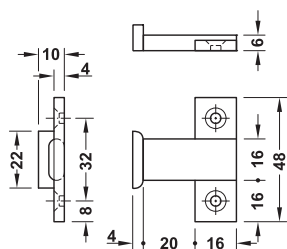


Installation	Cat. No.
With chipboard screws with countersunk head \varnothing 4.0 mm	262.49.358
With Varianta special screws with countersunk head \varnothing 3.0 mm or 5.0 mm	262.49.359

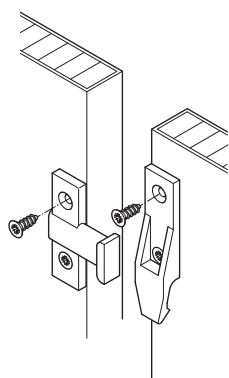
Packing: 200 pieces



→ EHS Panel component



Installation



Installation	Cat. No.
With chipboard screws with countersunk head \varnothing 4.0 mm	262.49.369
With Varianta special screws with countersunk head \varnothing 3.0 mm or 5.0 mm	262.49.370

Packing: 200 pieces



DGH-M-INT 2013, HDE-en, 01/13; Dimensional data not binding. We reserve the right to alter specifications without notice.

Keku Push-in fitting



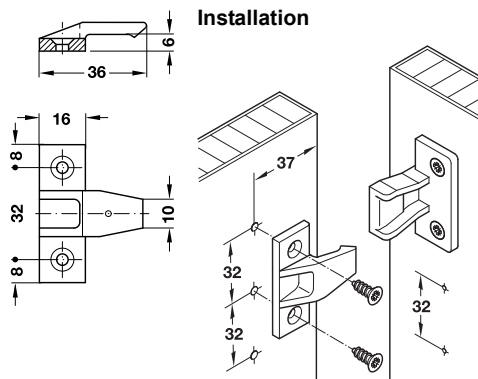
Keku Push-in fitting

- Do not treat with chemical solutions or aggressive greases
- Do not adjust by hammering
- Not for suspended loads such as ceiling panels

- Area of application: For fastening panels to frame structures
- Material: Plastic (polycarbonate)
- Colour: Black
- Temperature range: -100 to +135 °C
- Suitable for screw fixing in 32 mm series drilled holes



→ **AS Frame component**
For screw fixing to substructures

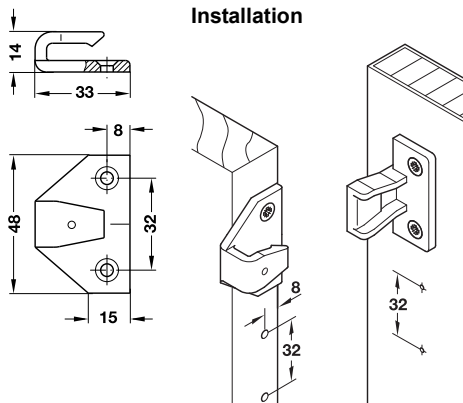


Installation	Cat. No.
With chipboard screws with countersunk head Ø 4.0 mm	262.50.368
With Varianta special screws with countersunk head Ø 3.0 or 5.0 mm	262.50.377

Packing: 200 pieces



→ **ASR Frame component**
For screw fixing to substructures

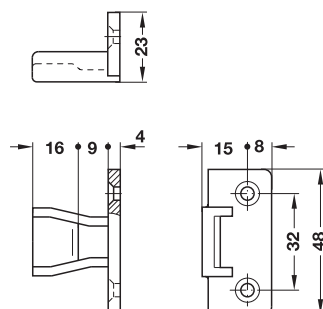


Installation	Cat. No.
With chipboard screws with countersunk head Ø 4.0 mm	262.50.390
With Varianta special screws with countersunk head Ø 3.0 or 5.0 mm	262.50.391

Packing: 200 pieces



→ **AS Panel component**
For screw fixing to panels



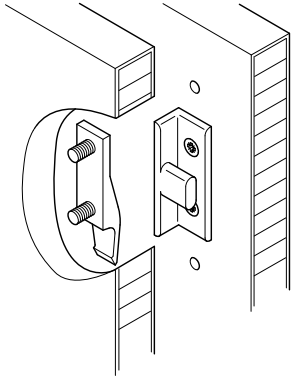
Installation	Cat. No.
With chipboard screws with countersunk head Ø 4.0 mm	262.50.359
With Varianta special screws with countersunk head Ø 3.0 or 5.0 mm	262.50.358

Packing: 200 pieces



DGH-M-INT 2013, HDE-en, 01/13, Dimensional data not binding. We reserve the right to alter specifications without notice.

Keku AD Double partition fitting



Keku AD Double partition fitting

- Do not treat with chemical solutions or aggressive greases
- Do not adjust by hammering

Area of application

Double partition fittings are used for:

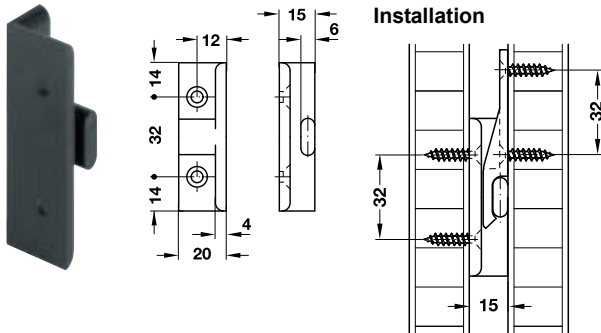
- Attaching sound insulating material to the door leaf
- Constructing cavity-type doors
- Double partitions on cabinet sides in door alcoves
- Connecting frame elements
- Linking elements
- Constructing sandwich elements
- Installing lightweight partitions
- Mounting wall elements (booth construction)
- Door installation as panel construction

- Material: Plastic (polycarbonate)
- Colour: Black
- Temperature range: -100 to +135 °C
- Suitable for screw fixing in 32 mm series drilled holes

Connector Technology

→ **Angled component**

AD 15 for panel distance of 15 mm, for screw fixing to substructure

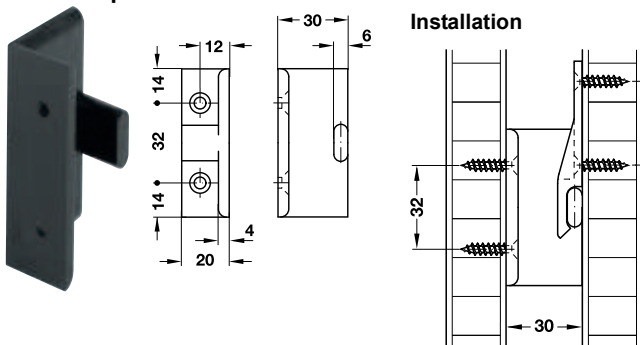


Installation	Cat. No.
With chipboard screws with countersunk head Ø 4.0 mm	262.51.380
With Varianta special screws with countersunk head Ø 3.0 or 5.0 mm	262.51.381

Packing: 200 pieces



AD 30 for panel distance of 30 mm



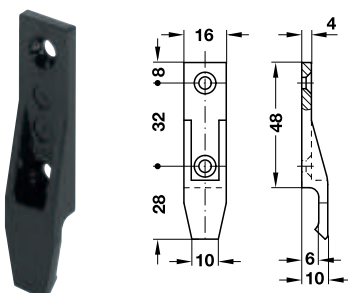
Installation	Cat. No.
With chipboard screws with countersunk head Ø 4.0 mm	262.51.390
With Varianta special screws with countersunk head Ø 3.0 mm or 5.0 mm	262.51.391

Packing: 200 pieces



→ **Panel component**

With lip, for screw fixing to panel



Installation	Cat. No.
With chipboard screws with countersunk head Ø 4.0 mm	262.49.356
With Varianta special screws with countersunk head Ø 3.0 or 5.0 mm	262.49.357

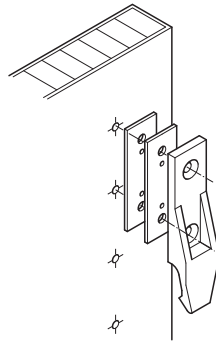
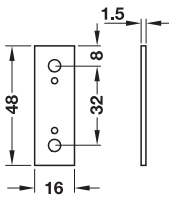
Packing: 200 pieces



DGH-M-INT 2013, HDE-en, 01/13; Dimensional data not binding. We reserve the right to alter specifications without notice.

EH Spacer plate 1.5 mm

Stackable, self-fixing



- Area of application: Spacer plate for EH panel components
- Material: Polycarbonate (PC)
- Colour: Black

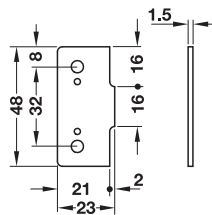
Installation	Cat. No.
With chipboard screws with countersunk head Ø 4.0 mm	262.49.353
With Varianta special screws with countersunk head Ø 3.0 mm or 5.0 mm	262.49.355

Packing: 400 pieces



AS Spacer plate 1.5 mm

Stackable, self-fixing



- Area of application: Spacer plate for AS panel components
- Material: Polycarbonate (PC)
- Colour: Black

Installation	Cat. No.
With chipboard screws with countersunk head Ø 4.0 mm	262.50.352
With Varianta special screws with countersunk head Ø 3.0 mm or 5.0 mm	262.50.354

Packing: 400 pieces

